

DUNG BEETLES

Harriet Trueman MSc
Wilder Ouse Officer

Wilder Ouse catchment
Ashdown forest → Newhaven

Supporting - dung decomposition
- parasite suppression
- seed dispersal
- aeration from tunnels



Agriculture
£367m
of ecosystem services

Use antenna to find the fresh poo



Needs to be enough dung to support beetles

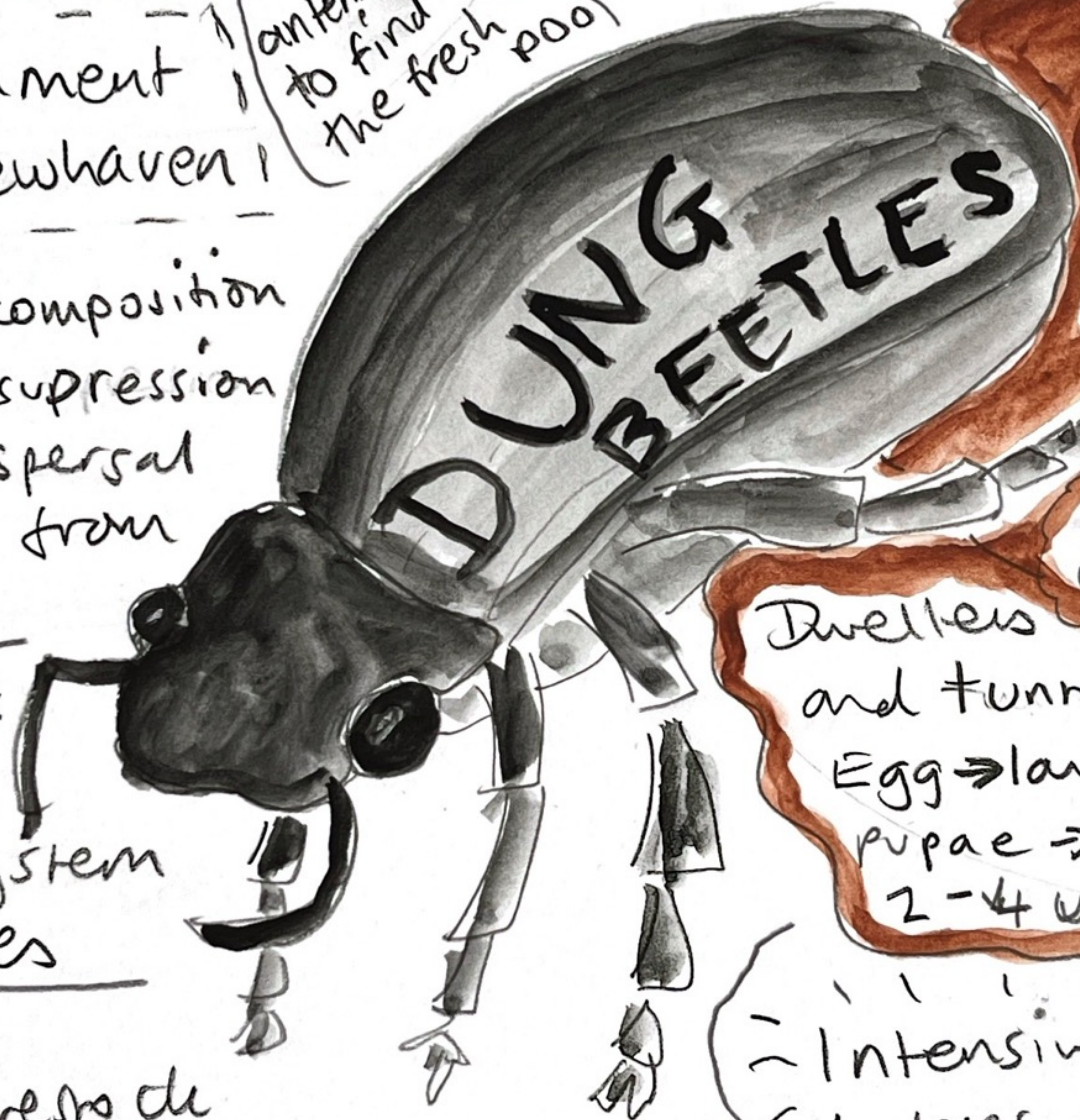
needs to be good consistency!



housing over winter / dung removal means there's less poo

Livestock diers can affect beetle habitat

Fibre ↑



ECOSYSTEM ENGINEERS

60 species in the UK

Dwellers and tunnellers
Egg → larvae → pupae → adult
2-4 weeks

- Different animal dung
- Different times of year

Difficult!

Some live IN the poo

How to HELP?

- Varied diers for livestock
- Avoid blanket use of wormers [fecal egg counts] [quarantine]
- Mosaic of habitats
- Keep livestock on the land through the year
- Advocacy and citizen science projects

Intensive agriculture depletes dung beetles

90% of wormers end up in the dung!

wilderouse@sussexwt.org.uk

1m+

Some live under near

